

To supply water at pressure in domestic applications.



Applications:

To supply water at pressure in domestic applications. With protection to prevent the pump from operation when dry.



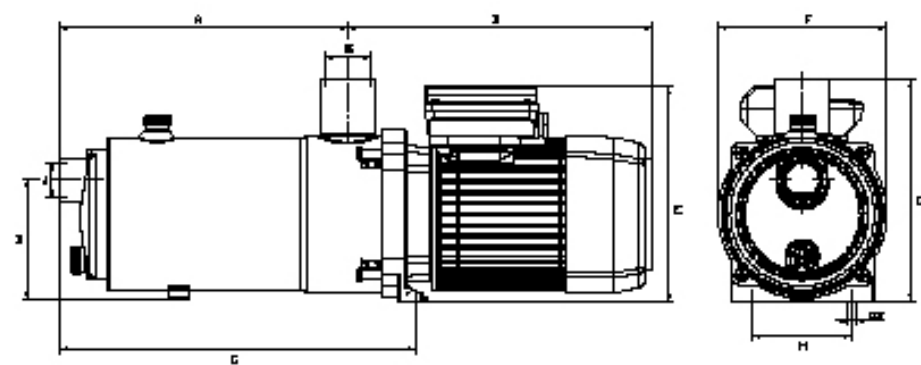
Quiet running horizontal multistage centrifugal pumps, with self priming valve resistant to impurities, dry run protection and device to ensure pressure water supply. Self-priming up to 9 m.

Materials:

Pump body and impellers in stainless steel AISI-304.
 Motor shaft in stainless steel AISI-420.
 Diffusers in glass loaded Noryl®.
 Mechanical seal in graphite and steatite.
 Motor housing in aluminium L-2630.
 O'rings in EPDM/NBR.

Motor:

Asynchronous, two poles.
 IP 44 protection.
 Class F insulation.
 Continuous operation.

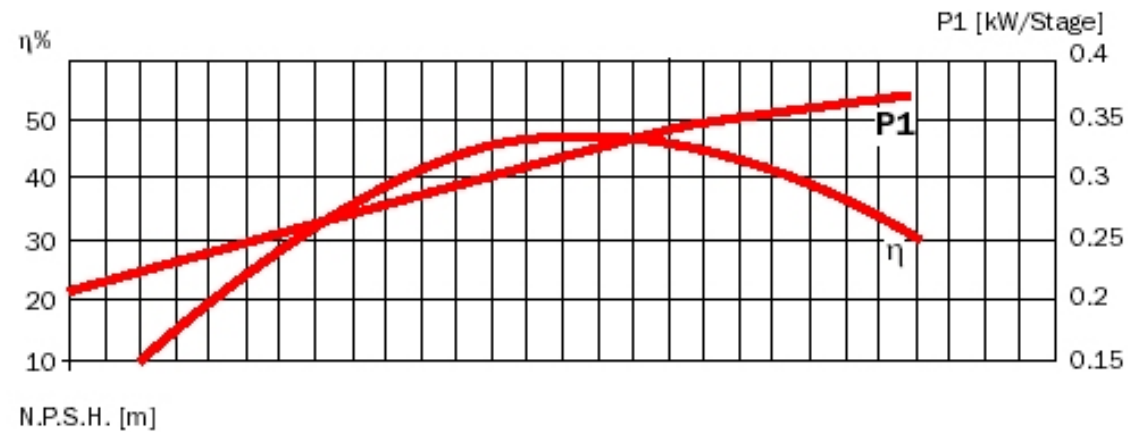
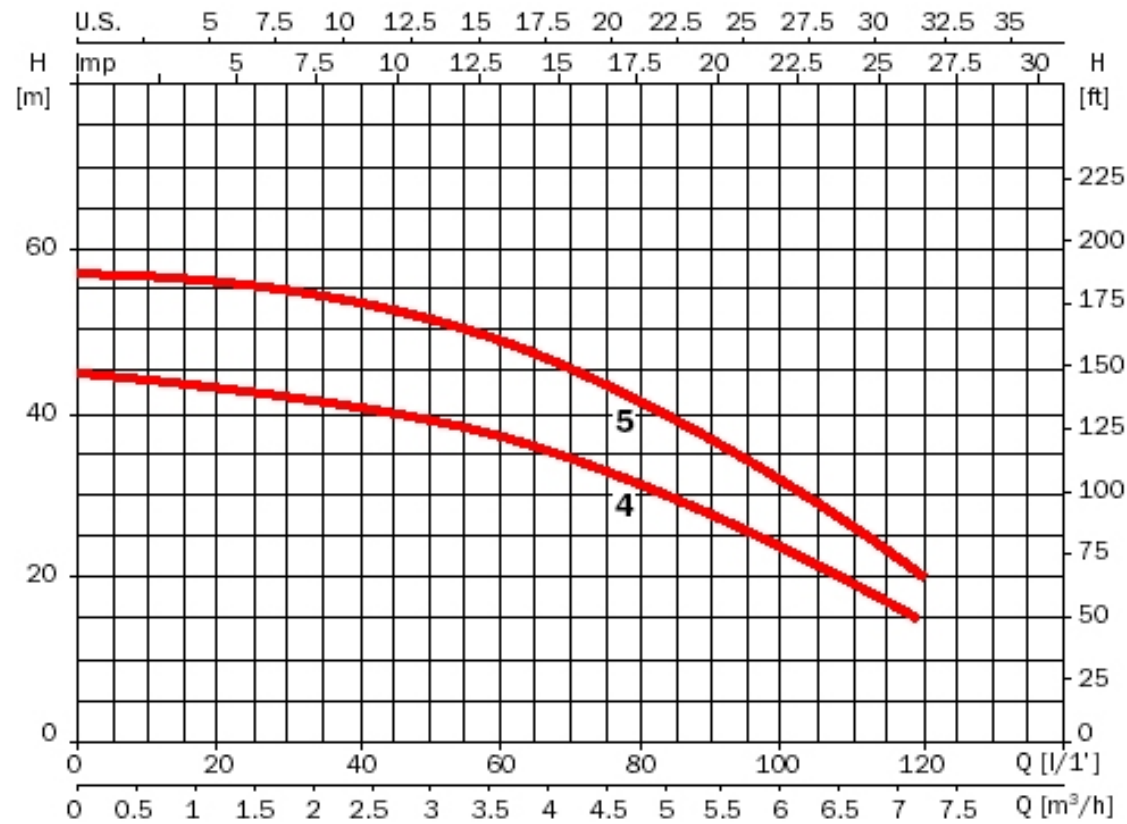


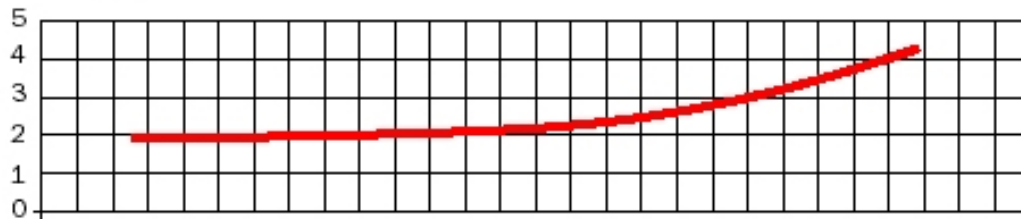
Single phase version built-in thermal protection.

Technical features:

Electronic display with leds showing line, pumps in operation and failure.

	A	B	C	D	E	F	G	H	I	J	K	Kg
Tecnopres 25 4	236.6	107.5	298.1	267	190.5	148.5	196.3	88	9	1"	1 ^{1/4} "	9.5
Tecnopres 25 5	263.2	107.5	324.7	288.5	190.5	148.5	196.3	88	9	1"	1 ^{1/4} "	11





230 V 50 Hz	230/400 V 50 Hz	A			P1 (kW)		kW	HP	μF	L/1' m³/h	15	30	45	60	75	90	105	120
		1~ 230 V	3~		1~	3~												
			230 V	400 V														
Tecnopres 25 4M	Tecnopres 25 4	6.8	4.3	2.5	1.5	1.4	0.92	1.25	16		44	42	40	37	33	28	22	15
Tecnopres 25 5M	Tecnopres 25 5	7.4	5.2	3	1.7	1.7	1.1	1.5	25		56	55	53	49	43	37	29	20